

Quality Relationships

Thank the lord for “connectors”. In *The Tipping Point: How Little Things Can Make a Big Difference*, Malcolm Gladwell paints the picture of how a connector works. **Peaches Gilbert** connected Assistance Dogs of the West and La Mariposa Montessori School. She said to **Katrina Holder at La Mariposa in 1998**, “I know you and Jill are a perfect match; you have to meet one another.” When the head of La Mariposa met the founder of ADW, they recognized immediately they were a perfect match. Both envisioned huge achievements: how children could learn deeply and effectively, how training service dogs to help people with disabilities could fit into this learning process, and the importance of community service. Both also had the wisdom and good fortune to attract some great team members to help reach their goals.



Katrina Holder and Jill Felice.

When the ADW in-school assistance dog training class started with La Mariposa sixth graders, there were some very excited young students. Peaches Gilbert’s daughter



Bea and son Sascha were early student trainers and the Gilbert family generously underwrote ADW program support. Holder recalls how many younger students couldn’t wait to get to 6th grade to take dog class. One school hallway had stuffed animals hanging from coat hooks, and third and fourth graders would take the stuffed dogs out to the yard to “train them” to the assistance dog commands.

Katrina and Jill both understood what these hours of human/animal therapy could do for children with social and emotional challenges. Children with delayed speech development blossomed with the opportunity to speak commands to dogs that were waiting to respond non-judgmentally. One very quiet young man delivered the most honest, confident speech when he publicly graduated the dog he had trained. This same young man took the ADW program with him to high school,

continued on page 8

Grade A Plus

Beverly Francisco-James, retired US Veteran, is a quiet hero. Born in the Four Corners area, Francisco-James joined the Navy, served for nearly fifteen years and **did** see the world... Japan, Korea, Pensacola, Kuwait. After retirement from the Navy, Beverly returned to NM to be close to her Navajo roots; a retirement that unfortunately didn’t look like what she planned. As a result of the arthritis medication Remicade



Beverly Francisco-James and Tilley.

prescribed while in the service, she suffered severe brain injury. Remicade deteriorated a blood vessel in her brain, ultimately destroying her thymus gland. This gland processes a type of white blood cell that governs cellular immunity, which means it help cells recognize and destroy invading bacteria, virus, and abnormal cell growth such as cancer, and foreign tissue. As a result of the damage, Beverly lost sight in her left eye and is partially paralyzed on the left side (she startles easily from this deficit), lost short term memory, and suffers from some hearing loss and frequent exhaustion.

So, why is she a hero? Francisco-James says, “My brain damage is a blessing...God’s way of opening a door so I can help people.” She spends much of her time now working with veterans from current conflicts and their families, talking about brain injury. She helps people understand the symptoms, teaches them what to expect and ways to react. Beverly is on the board of the Brain Injury Association of New Mexico where she is also Volunteer Coordinator. An committed advocate, she has spoken and testified about Brain Injuries to government health agencies in Washington, DC and at national conferences.

Beverly attended Client Placement Training in April to learn how to work with Tilley, a lab/golden cross who has already helped enormously with balance, awareness of surroundings, comfort and full time companionship. The two gals are incredibly sweet, funny and hard working characters.

Before the blinding headache that changed her life, Beverly was a self-described super “type A” personality. Everything was organized, labeled; she juggled many projects, and was an active runner. Today she’s learned to slow down some, walk carefully, put her health first and let the small stuff go. But to everyone at ADW and the veteran lives that she touches, Beverly Francisco-James still rates a huge A plus.

FROM THE DIRECTOR

Change is unavoidable bringing with it great benefits and huge challenges. Some changes are within our control and some far beyond what we can touch. The current economy has certainly presented hurdles to overcome. Since ADW is managed closely, is fiscally conservative and is working with a diverse revenue stream, we are in good financial shape relatively speaking.

We see foundation awards and corporate gifts slowing, and the competition for funding in all areas is fierce. The great thing about ADW though, is the scope of the services we provide and the people with whom we have relationships. Our good friends continue to find resources to invest in ADW and more referrals generate more contacts...for more student trainers, for more clients, for more dogs, and for more financial and in-kind support.

At ADW, we commit to delivery of quality relationships. That's easy to say and easy to do when times are good. When stresses increase and resources are strained, the reality of our commitment to this core value takes enormous effort and energy. I am proud to report the sterling and near perfect record of quality achieved by our dedicated staff, our Board, Youth Board and Advisory Council, our dear volunteers, invaluable donors, our vendors and the communities we serve.

We are sincere in our appreciation of your commitment, efforts and resources to help us build ADW sustainability. We will continue to provide priceless "love and freedom" to our clients, opportunities for growth in leadership and compassion to our student trainers and joyful relationships wherever we can with your help.

Truly,



Executive Director

ADW Board Member Peggy McDowell

For the last 32 years, Santa Fe has been my home. I have worked a variety of jobs; waitress, retail sales, construction, and exercise instructor. In 1982 I opened Kick's, a dance and exercise store. The following year, I married Doug McDowell (McDowell Construction) and we were blessed with two wonderful kids, Kaitlyn and Patrick. In 1995, my son (who had been diagnosed with juvenile diabetes) and I heard about a diabetic support meeting where we could meet a dog named Monte who also had diabetes. Monte's owner was Jill Felice whom I had known many years before; now here she was the founder of a new non-profit organization Assistance Dogs of the West.

A few years later, our son Patrick enrolled in the ADW after school assistance dog training program and I tagged along. This is where I first learned what ADW was really all about and also when I fell in love. When you put dogs, kids and community service together it doesn't get better than that for me. I knew that in some way some day I would be part of this organization. Then in 2006, my friend Judy Kahn and I were asked to help with an ADW fundraiser. ADW needed people with special event experience; so we brainstormed with board members and Jill to develop a silent auction and dog graduation, my very first. I was bowled over with respect for the integrity and hard work of the people who volunteered for ADW. Every graduation reaffirms this for me, not to mention the quality of the dogs, the style of training and the range of programs offered

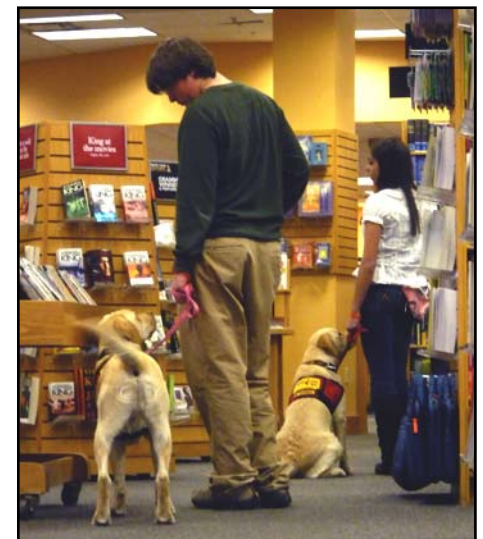
I joined the ADW Board in 2007 and with every meeting I am impressed with the resourcefulness and dedication of my fellow board members in working to attain our goals. There is an air of professionalism, of taking care of business, yet it's always fun and happy. I never fail to leave a meeting without feeling I have learned something new and without increasing knowledge of what it takes to continue to grow ADW and reach our goals. I am very

proud to be a board member, and I love spreading the ADW dharma, enlightening people to who we are and what we want to do.

I'm excited about a new ADW project, working alongside my son, Jill and other ADW staff to develop a training process for dogs to detect the diabetic's blood sugar high or low. I can only imagine how comforting it will be to have a wet nose nudging you as a reminder to check blood sugar levels. I am continually grateful for the ADW connection in my life.

~ Peggy McDowell

Desert Academy Students and Dogs Working on Public Access



A trip to Borders.



Melly at work with classmates in background.

Teaching, Learning and Growing

Hi, I'm **Kaila Matthews**. I first heard about ADW through a friend of a friend and decided to give it a try; it was one of the best decisions of my life. As a student, I learned the basics of training, the commands and how ADW works with its dogs - no loud voices or getting mad at the dogs, only kindness, firmness and leadership. I had been a student trainer for three years and graduated a dog, sweet silly Logan, when ADW asked me to be a Teaching Assistant (TA) in the After School Program at La Mariposa Montessori School and I readily agreed.



Kaila and Tilley.

For the past two years, through this training, I have learned tons about teaching children. As I watched the kids struggling with leadership and getting the dogs to pay attention, I began to realize the importance of tone and body language. One difficult part for me has been trying to communicate that to kids who do not know what "body language" is! I have also seen clearly the different training tools that can be put to use, including posture and position to cue the dog.

My favorite part of my job by far is watching the students find a dog they really love. Once they do, each student inevitably grows as a trainer. The kid who before could not get their dog to "stay" can get their dog to stay in place for minutes at a time while they walk around the room getting brushes, snacks and treats. It is wonderful to watch.

I also love to watch the dogs and become familiar with them. Each dog has their own unique personality that shows. They learn differently, think differently and demand different skills from the students. I have been fortunate enough to watch many dogs come as puppies, go through the program, and leave as accomplished service dogs... and each time it is just as amazing.

I have known the most recent ADW litter of puppies since they were four-week-old bundles of blond fluff. I watched them learn their names and how to sit. Now, they are all advanced in their training and many are graduating this year. As they leave, another bunch are already learning - Ozzie, Tori, Melly and Ruby. I already see in them the signs of good service dogs; the focus on their one person in the room and their impatient demand to get to work. I cannot wait to watch them grow from puppies to dogs, to see what personalities emerge and to match them with the particular student who will work best and grow as a trainer right along with them.

~ Kaila Matthews, 16
ADW Teaching Assistant and Youth Board Secretary

An Angel from Texas

A new face is around ADW these days, a fluffy, furry, smiling face belonging to Angel, a one year-old **Labradoodle**. Angel is "visiting" ADW from Texas for 9 months of training before returning to her special girl, Julie. She is settling in nicely and has already won the hearts of ADW staff and the devotion of several smitten student trainers. Angel's gentle nature and soft, fluffy coat draw adoring hands that can't resist petting her and her rather elegant looks turn heads wherever she goes.

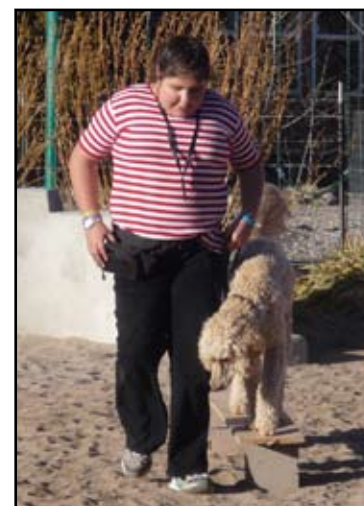


Julie and "puppy" Angel.

Angel was originally placed with Julie and her family as a gift from the **North Dallas Make-a-Wish Foundation**. Julie is quadriplegic as a result of numerous strokes, but has had and trained numerous dogs before her disability progressed and made this task impossible. When their first assistance dog training plan fell apart, Make-A-Wish asked ADW to take on the job. The North Dallas Make-A-Wish Foundation had found ADW and supported placement of a dog, **Berkeley, with a little girl with autism, Buffie Guetersloh** and her family in Prosper, TX last year. The ADW reputation as a solid assistance dog training organization has folks calling for our services from across the country.

A cross between the Labrador retriever and the Poodle, Labradoodles were originally bred in Australia to produce guide dogs for people with allergies to dog fur/dander. Since the poodle has hair instead of fur, human allergies to this breed are reduced dramatically. The Labradoodle appearance can vary greatly, but the breed is generally smart, friendly, gentle and trainable and Angel exemplifies all these qualities. She has learned quickly, mastering more than 30 commands in just a few months. Retrieving is her favorite task; she will happily collect any dropped item and gleefully prance to her handler to deliver it.

Angel has many devoted fans among ADW staff and students. She works with student trainers in classes at Santa Maria el Mirador, Chimayo Boys and Girls Club, Santa Fe Prep and La Mariposa Montessori School. Her learning style is a bit different from other ADW dogs; students find that a little extra patience and perseverance are required in working with her, but these efforts are repaid by a gentle affection and pleasant working style. Her trainer at La Mariposa, **Gressia Burrola, 13**, particularly enjoys working with Angel, noting that "Angel is always happy; always happy to see you and happy to work." We too are happy that Angel is with us, and look forward to returning a happy, skillful working dog to Julie.



Gressia and "growing up" Angel.

Program News

Recent **Staff Training and Development** sessions have included CPR, Managing Stress in the Workplace, and Effective Communications... besides the every day advanced skill development in dog training skills and tools. Program staff is initiating research and beta development for training **assistance dogs for people with diabetes**.

Santa Fe **Capitol High School Special Education** students are finishing their second semester as student trainers. Taking the bus up to ADW every Wednesday, these trainers add each week to their abilities to achieve vocational and recreational goals. **Proctor & Gamble (Eukanuba and IAMS)** has joined the ADW support team with financial resources for this and all educational programs.

Santa Maria El Mirador, Alcalde facility student trainers with disabilities learn new skills every Monday afternoon with ADW instructor/trainers and dogs. Some student trainers also work on Tuesdays in the Santa Fe - Santa Maria class.

Rio Grande Elementary After School enthusiastic young student trainers meet every Monday afternoon in Santa Fe (see photo on next page). Some of their dogs are graduating this Spring, so we thank each of those trainers for their help in preparing dogs for graduation.

Two new **Owner/Self Trainers** work with instructor/trainer **Sue Barns** to train their dogs in assistance work and public access skills. **Grayson Schaffer**, a writer for **OUTSIDE Magazine** with dog Danger, is unique in that they are taking the training course in order to become familiar with the material and effort involved in completing this process. They will not have public access at the end of class; Schaffer has a blog detailing this: <http://outside-magazine.com/blog/2009/03/dangers-off-to-service-dog-school.html>, and will write the occasional OUTSIDE Magazine article to help people better understand the process.

Santa Fe Boys & Girls Club student trainers have been working on "restaurant skills" with their dogs. Since all assistance dogs are probably going to have an outside dining experience

at some time, they need to know how to sit under the table quietly, how not to react to delicious food smells or restaurant noises like glasses and plates clinking, and waiters arriving with large trays.

Chimayo Boys & Girls Club students supported by the **Banfield Charitable Trust** are learning to train Search & Rescue skills to their dogs. These skills are used with many of our younger clients and their families. If a child with autism or developmental challenges is tempted to "disappear" in the house or run off in public, ADW dogs are trained to "find" the child or alert the caregiver to the activity.



Santa Fe De Vargas Middle School Citizen Schools student trainers are new (see photo below). Citizen Schools partners with middle schools to expand the learning day for low-income children across the country. Citizen Schools students develop the academic and leadership skills they need to succeed in high school, college, the workplace, and civic life. At 44 campuses in seven states, a second shift of afternoon educators are engaged, who provide academic support, leadership development, and apprenticeships: hands-on projects taught by experts like the ADW instructor/trainer **Anna Wilder**.



Spring 09 Client Placement Training (CPT) finished up early April with 4 more handler/dog teams. The amazing amount of effort our clients put in to learning how to work with their dogs in private and public over the two week period is an inspiration to everyone at ADW. Many thanks to the **Hotel Santa Fe** for the generous client accommodation support.

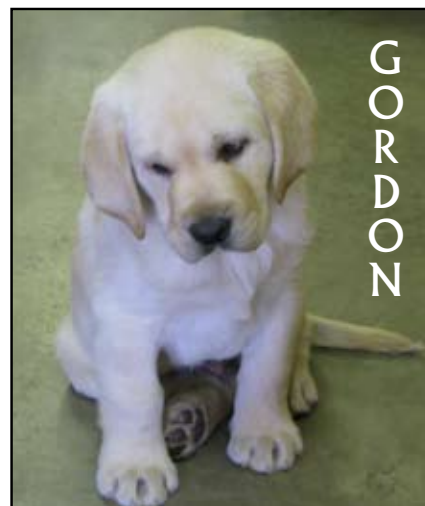
This years' **Santa Fe Prep TAP** community service program student trainers are extremely interested in the process, ask great questions and are all 100% involved each week they meet to train their dogs.

"Mixed ability" student trainers in the **Albuquerque Jewish Community Center After School Program** work with **Jodie Backensto** and **Kristy Anderson** to integrate dog training, recreation and vocational skills.

Albuquerque **Dogwood Community Program After School** student trainers also focus on integration and skill training. Instructor/trainer and occupational therapist **Melissa Winkle** leads these classes and is the co-creator of all ADW mixed ability and disability student training programs. See **Aria Ponder** student article.

ADW Albuquerque Boys Reintegration Center assistance dog training program generously funded by **The Annenberg Foundation and Planet Dog Foundation** has graduated two classes of student trainers (see photos on page 10). These young men have worked 4 days a week, developing compassion, leadership, dog training skills (achieving 100% **AKC Canine Good Citizenship** awards) and making a concrete community service contribution. We thank them for their dedication.

There continue to be at least **30 ADW dogs in training**. Our most recent addition, Gordon, may be one of the happiest participants we have ever met. He came to ADW as a partial donation from a wonderful breeder **Dream Chaser Labs** in Colorado Springs, CO.



Students Say

Hi my name is **Aria Ponder**, I am 11 years old and I live in Albuquerque, New Mexico. About two years ago my mom was reading the **New Mexico Kids Magazine** and asked me if I would like to go to a summer camp at Kid Power, the camp was called Assistance Dogs of the West where I would get to work with dogs.



Aria and Toby

Well, it didn't take me long to answer her, because I love all animals, especially dogs! So, my mom signed me up for Assistance Dogs of the West summer camp and I have been attending ADW every since and I love it!

I have learned so much about dogs. I have learned to groom dogs, brush their teeth, put on and take off leashes, how to walk a dog, and the rules of taking dogs into public, what I like best is how to train dogs for people with disabilities. It is very challenging and it takes a lot of patience, but it is so great when you see the dogs learning new commands and eventually being placed with people who need an assistance dog.

I am so lucky to get to be with such great instructors who enjoy working with people and dogs. I know that I am only 11 years old, but I am already thinking about college and becoming an OT. I am hopeful that I will always be a part of ADW!

In The News

Antonio Garcia and his assistance dog Gabe, were featured in a March issue of *Journal Santa Fe*. Shortly after graduating high school, Antonio was stricken with hantavirus pulmonary syndrome and transverse myelitis, which left him paralyzed from the chest down.



Antonio was paired with Gabe in part through a \$1,000 scholarship from the **Peace & Social Justice Committee of the Cathedral Basilica of St. Francis**. In a letter to the Committee, Anthony wrote:

My name is Antonio Garcia. I am nineteen years old. I am currently attending New Mexico Highlands University in Las Vegas New Mexico. I am majoring in forestry and obtaining a minor in Biology.

On my behalf I would like to thank the committee for helping me with my financial issues for the Assistance Dogs of the West training.

My assistance dog's name is Gabe. Gabe has been a big help for me. Gabe helps me out with my daily activities such as retrieving items that I have dropped and can not reach, pushing the handicapped buttons to open the doors etc. The main thing that Gabe really helps me out with is companionship. I have to say that my self esteem has risen because of Gabe and I am also more energetic. It is hard to imagine how I got along without Gabe.

Thank you once again,
Antonio S. Garcia

DOG TRAINING FOR KIDS!



Photo: Claire Rok

Since 1995 Assistance Dogs of the West has been teaching students to train dogs for people with disabilities.

Summer Programs in Santa Fe & Albuquerque for students ages 8 through 18 start in June.

Limited Enrollment. Call ADW to Register 505.986.9748 or visit assistancedogsofthewest.org



SUMMER PROGRAMS IN SANTA FE & ALBUQUERQUE



Students at Rio Grande Elementary begin learning how to train assistance dogs (at left and below).

Thank You from Assistance Dogs of the West

We want to take this opportunity to recognize our generous donors and supporters who helped us from **September 15, 2008** through **April 3, 2009**. (Later gifts will be recognized in next newsletter).

Major Donors* contribute over \$1000 and/or substantial in-kind services, time or effort.

Corporate and In Kind Donors

A.M. Investments
Alamodies: Bob Hearst
Carol Anthony*
BGK*
Betsy Armstrong and Natalie Barr
J. Chester Armstrong*
Stephen Auger
Eva and Ruby Auxier
Avalon Trust Company
Connie Axton/Ventana Fine Art
Jodie Backensto/JVB Studio
Joan Baker and Margeaux
Barker Realty: Make-A-Difference Fund*
Sue Begy and Clay Simmons
Lisa Bemis
Alex Betts
Sally Blakemore
Steve and Paula Blount
Lori Faye Bock
David Bradley
Liz Broderson
Rosemary Buscher
Tom Buscher
Café Pasqual's Gallery: Katherine Kagel
Margret Carde
Coca-Cola Bottling of Santa Fe*
DeVargas Center Merchants Association
Janie Dimmock
Dream Chaser Labs
Mark Durham: MAD Studio Inc.
Economos Works of Art*
El Farol
Emerald Earth
Enchanted Dreams Foundation
Steve Elmore
Ted Eudy and Dwight Holden
Hidden Chicken Restaurant
Hotel Santa Fe*
Farnsworth Gallery
John Fincher
Get Easy Advertising
Gallery Zipp
Galerie Zuger*
Isabella Gonzales
Lisa Gordon
Charles Greeley
Nomi Green
Jone Hallmark
Hand Graphics
Imogene Hughes
Eric Illick
Impact Printing
Pamela Jensen
JINJA Bar and Bistro
Ed Keller

KGL Associates, Inc.
La Mariposa Montessori
Las Mananitas Restaurant
Carole LaRoche
Kristin Lora Studios
Lynne Loshbaugh
Marcia Owen Associates
Lizette Marrero and Jennifer Pitt*
Anne Martinez
McDowell Construction*
Barbara McIntyre
Donna Middleton*
Donna Mitchell and Jim Sloan
Jennifer Muldoon
New Mexico Kids! Magazine
Fran Nicholson
Fast Signs
Frontier Frames
Pat Oliphant*
Marco Oviedo
Pranzo
Proctor and Gamble*
Leslie Rich and Denise Kusel
Rio Chama
Kari Rives
Ethelinda Robbins
Shelley Robinson*
Susan Rothenberg*
Abigail Ryan
Santa Café
Santa Fe Classic Rock
Santa Fe County Firefighters
SF Modern Home
Santa Fe Mountain Center*
Marna Schindler
School Heart, Inc.
Victoria Seale
Rodman Sharp and Emily Zants*
Chip Simons
David and Catherine Skinner
Brad Smith: Smith Oba Fine Art
Southwest Gift Baskets
Spine Solutions
Linda Strong
The Painted Dish
Bunny Tobias
Torino's @ Home
Trader Joe's
Tropic of Capricorn
Pat Trujillo Oviedo
Victoria Price Contemporary/Art & Design
Julie Wagner
Firth and Colin Walden*
Woods Architects Builders, Inc*
Whole Foods

Foundation Grants

\$1-999

Assistance Dog United Campaign
Beth Keenan Petronis Memorial Fund
GivingExpress Online
JM Lazarus Foundation
Santa Fe Trust
Stewart R. Mott Charitable Trust
Thelma Polkinghorne Revocable Trust

\$1,000-9,999

Banfield Charitable Trust
Clothes Helping Kids, Inc.
Las Campanas Community Endowment Fund
Santa Fe Community Foundation
The Kerr Foundation
NM Community Foundation, Thorne Family Fund

\$10,000 - 24,999

Bettina Baruch Foundation
Carlozzi Charitable Foundation, Inc.
Garfield Street Foundation
Laura J. Niles Foundation
Messenger of the Healing Winds Foundation
Thaw Charitable Trust
Wheless Foundation

Individual Donors

Anonymous
Mimi and Hirschel Abbot
Paul Abrams and Abigail Adler
Mark and Martha Alexander
Margherita Allardice
Julie and Scott Allen
Charmay Allred
Roeliff Annon*
Meleah Artley
Susan Bardes
Katherine Becker-Sheets
Eric and Rita Bendixen
Ben and Sunny Benjamin
Stephen Benjamin
Linda Berkeley*
Denise Betesh
Kay Birdsell
DiAnn and Ed Boice
Oru and Patricia Bose
Mary and Jeff Brannen
Bob and Connie Bright
Gina Browning and Joseph Illick*
Margaret Buckman and Jason Knutson*
Joseph and Dawn Calek
Kathryn Campbell
Angela Cassler

Ann Caudell
 Leslie Susan Champ
 Graeme Clapp and Anne Wright
 John D. Clark
 Frank Clark
 Susan Clark Basquin
 Carolyn Clark Beedle
 Alan and Merry Cole
 Corinne Collins
 Michael and Laurie Farber-Condon
 Cristen Conley and Mike Anderson
 Louise Cooper
 Roger and Patricia Copple
 Nancee Cortes
 Marianna and Timothy Crowley
 Basia and Johnny Cruz
 Nancy Dahl
 Deborah Dant
 Jordan Davis
 Linda Delk
 Glenda Dennis
 Nancy Dickenson
 Linda Dickson
 Ann Dilworth
 Dick and Ann Donnelly
 Margery Dorfman Weinbaum
 Wendy Dunaway and Mike McGonagle
 Alan Edison
Blake Emerson*
 Muriel Fariello and Barbara Seiler
 Gail Felice and Paul Therrier
 Jeff Fenton
 Patricia and Glenn Ferguson
 Kate Field
 Maureen and William Field
 Kathryn Flynn
 Karen Freeman
 Fred and Mary Garrison
 Rod and Randi Gesten
 David Godwin and Debra Woodworth
 Godwin
Nelle Grainger*
 Paige Grant and Neil Williams
 Dave Grusin and Nan Newton
Buffie and Chad Guetersloh*
 David Gunderson
 Dr. Sean Hamashige
 Eleanor Hartgerink and Michael Huvane
 Kyle and Ellie Harword
 Emilie Heller-Rhys
 Leonard Helman
 Dr. Thomas and Sonia Hendrix
 Edwin Hild
 Terri Hoisington
Katrina Holder*
 Bill and Mary Huey
 Wallace and Eileen Hutchinson
 Carl and Janet Iafonaro
Judy Illes and Keith Mausner*
 Sigrid Illes
 Terry Ives
 Jess Ivey
 Chuck Jones and Richard Parker
 Dr. Stephen Joseph and Elizabeth Preble
 Paula Kelt

Sydney and Isobel Kemper
Mark Kerr*
 Ellen Kurnit
Carol Lachenmeyer*
Jeri Leeds and Larry Tilley*
 Jack and Ariel Leibowitz
 Nancy Levi
 Bob Lewis
 Marvin and Gloria Lieberman
 Robert and Lynne Livingston
Tony Mark*
 Tony and Kay Marks
 Anna and David Mayberry
 Donese Mayfield and David Bailey
 Felicia and James Allan McCaughy
Peggy and Doug McDowell*
 Susan McGreevy and Herbert
 Beenhouwer
 Saba McWilliams
John and Brenda Midyette*
 Linda Milanese
 Denise Moedl
 Sherry Montero
 Sarah Morley
 Pari Morse
Alexander and Kimberly Motola*
 Eloy and Anita Munoz
 Alice Nelson
 Margaret Norton
 Max Olivas and Robin Huntington
 Patricia Owns-Marko
 Sherry Oylor
 Patty Patano
Ron Parisien*
 Kirtlye Parker and Jay Cawley
 Dennis Pekar
 David and Aronelle Suzy Pines
 John and Peggy Polk
 Sara Proctor
 Ed Ragsdale
 Nina Rasmussen
 Robin Raver
 Maureen Reed
 Mr. and Mrs. Thomas Reed
 Gary, Faith and Rebekah Reyes
 Nancy Reynolds
 Bryant Rice
 James Ritchie
 Walter and Elizabeth Ross
 Willow Rossi
 Celia Rumsey
Ann Rutledge*
 Ramona Sakiestewa and Andy Merrill
 Susan Sattel
Derek Saunders*
 Harold Saunders
 Kathryn Schepps
 Robert and Melisa Schonfield
Victoria Seale*
 Beth Seaton
 Nora Segal
 Larry and Carol Simpson
 Yvonne Smith
 Stuart Soll
 Evelyn Spiker

Marja and Everett Springer
 Jaime Staffaroni
 Carl and Susan Steele
 Heidi Steffen
 Dr. Elizabeth Stirling
 Valerie Stocking
 E. John and Linda Sutton
 David and Nichol Swift
 Gerald and Jo Tennant
Clare Eddy Thaw*
 The Danna Family
 Elissa Thompson
 Barbara Thornton
 Judy Traeger
 Barbara Thornton
 Walter Trela
 John Voorhees
 Patricia Waggoner
 Bill and Jill Wallace
 Andrew Weiss
 Maureen Wetzel
Barbara Windom and Victor Di Suvero*
 Melissa Winkle
 Susan Winter
 Marcia Wolf
 Robert Workhoven
Spencer Wright*
Brenda and Richard Yates*
S.P. and Estelle Yates*
 David and Natalie Zeng
 Ellen Zieselmann
Capital Campaign
 Dr. Elizabeth Stirling, PhD
Client Scholarship Fund
 Holly Sue Ayres
 Ken and Nancy Falk
 Dennis Frevert
 Henry Frevert
 Richard and Susan Frevert
 Barbara and Joseph Hindorff
Kay Kenton and Daniel Bethune*
 Lucia Hindorff
 Ron and Joy Mandelbaum
 Sean Murphy
 Johannes and Veronica Nurman
 Jane Clayton Oakes and Joa Dattilo
 Julie Patten
 Sherrie Petranovitch
 Dr. William and Barbara Plauth
 Karla Populus
 Larry and Christine Roblek
 Joan Rockafeld
 John and Kathryn Shipley
 Carol Ann Shriver
 Eugene and Sandra Tomlinson
 Monica Wells
Student Scholarship Fund
 Locals Care
Emergency Vet Fund
DeVargas Center Weingarten Realty*
ADW Youth Board*

continued on page 11

Quality Relationships

continued from page 1

designing a fund-raising plan to pay fees for fellow students. A traumatized, completely non-verbal little girl from Alaska came to live in Santa Fe with two elder foster "aunties." Through her ability to make an emotional and verbal connection with her dog, she underwent a transformation to human attachment and to speaking. Amazing relationships were formed and celebrated.

ADW began to work regularly on the beautiful La Mariposa grounds, and dog pens appeared next to the llamas, pigs, sheep and chickens. ADW dogs had the chance to work weekly with the 6th graders, and to benefit from the younger, softer voices and personalities. This exposure helps mold very flexible dog temperaments that better match to human partners with disabilities, and it also set the model for growing the ADW educational program among younger students. Katrina at La Mariposa graciously offered the grounds to ADW after school and summer programs for open enrollment. Young people from 8 to 18 attend these classes each fall, spring and summer, learning and growing themselves and the ADW program. The Gilberts remain strong friends and supporters to both ADW and La Mariposa, and the big team is indestructible.

Two visions of great programs to build and respect relationships have turned into one solid success story, with extraordinary teamwork in support. A special La Mariposa dog training building has been created for ADW program use. More than 200 La Mariposa students have worked with ADW staff and dogs, and many really lucky Santa Fe student trainers in afterschool and summer programs have access to an experience in dog training heaven.



La Mariposa's Training Building for ADW. Inset shows inside the building.

Project Known Quantity

US soldiers today are coming home from areas of conflict with physical and emotional challenges; this is the youngest US military group ever to serve and our soldiers with disabilities often ask for dogs rather than canes or other devices because they feel service dogs better fit their lifestyle and needs.

We want to give service dogs to our Veterans who need them to help improve lives.

ADW and **Isabella Gonzales**, a Galisteo, New Mexico artist, have found a way to touch the lives of US veterans and at the same time honor our fellow Americans who have given their lives in service to our country. The **Project Known Quantity** goal is to raise money to provide service dogs to US veterans at no cost. **Known Quantity** is an art piece with an inspirational message, made of clusters of ceramic thumb prints. Each thumb print celebrates a very special life, representing a unique and individual soldier who died in service to our country in the Iraq war. The cost for each cluster of 50 thumbprints is \$300.00.

We are reaching out to students of all ages, to churches and to community service groups to sponsor clusters. All the tax-deductible donations raised will go into a fund to provide service dogs to Veterans whose lives physically, emotionally or psychologically will be improved by the support and love of a service dog. Each dog costs between \$15,000 and \$20,000 to raise and train over a two year period, and service dog organizations across the country are preparing them for their future service.

Please join **Project Known Quantity** efforts by donating \$300.00 to sponsor a cluster. Let us know how you raised your funds so we can add your story to our website and press materials. Pictures of your fund raising team are greatly appreciated too. Make your support to our veteran heroes a known quantity.



ADW News Barks

De Vargas Center in Santa Fe hosted **Pet Photos with Santa** last November. Long lines of holiday shoppers also brought their pets or borrowed an ADW dog for these photo ops and fun was had by all.

The **ADW Holiday Celebration** at the Santa Fe Women's Club was a festive event for staff, Board, volunteers and dogs.

Thank you to **Victoria Price Art & Design** and **SF Modern Home** for the annual Holiday Shopping Event with ADW as a beneficiary.



The **Assistance Dogs International North America Conference** in Orlando this January offered opportunities for networking with colleagues, industry learning and organizational development. ADW staff attended workshops on Dogs for Diabetics, national service dog access law revisions, the evolution of the cognitive dog, Dogs for Veterans, Courthouse Dogs and more.

The **ADW Youth Board** held a **"Win Training for Your Dog"** raffle and made \$1200 for the Emergency Veterinary Fund. Their next fund raising idea is an ADW Film Festival. Stay tuned for more info. Our first Youth Board group will be "graduating" some members and adding new members May 2009. Congratulations and great thanks to **Rebekah Reyes, First Youth Board President.**

ADW Staff attended the **National Spirit Conference** hosted by Susquehanna Service Dogs in PA. Assistance dog trainers from agencies across the country share training knowledge, best practices and new tools.

Thank you to **ADW Board Member Dr. Larry Tilley**, who invited our ED to attend the **Western Veterinary Conference** with him in Las Vegas this spring. They met with veterinary supply and product business owners, publishers and veterinary associations to identify potential resources and support.

ADW Program and Service Dog Access Presentations and demonstrations have been done by staff and student trainers for the SF Lions Club, Lovelace Rehab Hospital Spinal Cord Injury Health Fair, United Church of SF, the Buckaroo Ball, SF Civitans, SF Standard Poodle Group, Albuquerque Montessori School, Fayette Academy Elementary and more.

Thank you to **Advisory Council member Dr. Brent Parker** who spends time each **Client Placement Training** talking about dog health maintenance with our clients.

ADW staff has written articles about **Service Animal Access** for the **NM Restaurant Association** magazine and about Assistance Dogs for the **Santa Fe Monthly** magazine May

animal issue. Great articles have appeared in the **Journal North** and the **SF New Mexican** about ADW clients and their dogs.

New Puppy Raiser classes continue in Santa Fe on Thursdays from 3:30-5:00 pm and on Tuesdays from 5:30-7:00 in Albuquerque. The next class will begin in June.

Experienced Puppy Raiser meetings continue in Santa Fe on Thursdays from 5:45-6:45 pm.

ADW staff, clients and dogs attended the **American Association of Veterinary Acupuncturists** national conference in Albuquerque, including an info booth and ADW dogs used in diagnostic workshops getting some great advice for improved health.

The **Albuquerque Balloon Museum "Children of War, Voices for Peace: Japanese and American Perspectives"** exhibition tells the mostly unknown story of the Fugo Balloon Bombs, made by Japanese children in WWII, that flew the jet stream to North America. A day full of demonstrations and performances highlighting Japanese culture, World War II history, Women's History Month and Peace Organization for Youth was held and ADW participated with dogs and student trainers, demonstrating skills to be used in support of US Veterans. See the **Project Known Quantity** article on page 5.

Thank you to good friend and Academy Award winner **Alan Arkin**, who taped a radio Public Service Announcement for us about 2009 ADW Graduation. Go see his new movie **Sunshine Cleaning!**

Major Donor Thanks

Every contribution to ADW is gratefully appreciated and helps us do good work.

There are some folks and organizations with greater resources who have been so generous to ADW we like to offer special thanks. **Blake Emerson** who has been a friend to ADW for years and has a strong love for animals and what they can do to help us all, has made substantial contributions. When we see that annual \$10,000 donation from Blake, we are honored by her confidence and support.

Ann Rutledge continues to be a wonderful supporter. She is not only generous with another contribution of \$40,000, but great fun to know. We all like music along with dogs and community service, so you might run into Ann and some of us out on the town!

Banfield Charitable Trust has awarded ADW another \$7,000 grant in support of the Chimayo Boys & Girls Club program. This will keep that Search & Rescue skill work active. **Proctor & Gamble** found ADW through our website (new and improved...www.assisteddogsofthewest.org) and encouraged a grant submission. We have received \$5,000 in support of At-Risk Student Trainer programs.



Trainer's Tip

Training "Come"...one of the most important and useful commands

Training your dog to come when you call is one of the handiest commands to have in your bag of tricks, especially when out walking or playing in the park. To begin, the command "Come" must always be associated with something positive. You as trainer must avoid using the command "Come" if you plan to scold or do something objectionable to your dog (i.e. a bath or confinement.) Also, if you use the command "Come" and then leash your dog to take it away from the park, the dog might begin to associate the command with a negative consequence. To begin teaching your dog "come" here is an exercise to introduce the idea: have a friend sit at one end of a room and you with the dog

at the other. Take turns calling the dog's name along with the command "Come." Be sure to use an upbeat tone of voice. You should use really good food, treats, toys, etc... to entice the dog to respond to the command and Reward generously whenever your dog responds.

Next take your dog out into the yard or some other enclosed outside area on a long leash. As soon as it begins to walk away from you, ask it to "Come". As your dog's ability improves, coming every time you call, start introducing distractions into your practice sessions. When your dog is reliably and consistently returning to you, even when there are distractions, then you can begin to train "Come" without the leash, using the same process.

When your dog is reliably consistent in obedience to your "Come" even without a leash and has demonstrated the desire to obey you

over interesting distractions, you can take your dog to the park and allow it to run free knowing when you say "Come", it will. We recommend that you keep treats with you at all times when walking/playing with your dog to reward him/her every time he comes when called. This applies even to older dogs, and will help insure you regularly get a reliable response to "Come" when you call.

ADW Albuquerque Boys Reintegration Center Graduation



The training graduate showing a "wave" or standing shake with his dog.



The grads are ready to go...



Except for Benny, the labradoodle, who's taking a nap.

A Day In The Life

Judith Newton, client and Advisory Board member has a blog on the ADW website called **Diary of a Dog** at <http://www.assisteddogsofthewest.org/category/diary-of-a-dog> Current assistance dog Chutney will be retiring soon and they are interviewing for a successor dog. See what goes on day to day from a dog's point of view.

How You Can Help

Your tax-exempt gifts can be used to help with the following needs and expenses:

For Students

Single Student Trainer Session Sponsor	\$35
Single Semester Student Trainer Sponsor	\$400
School Program Student-Trainer Sponsor	\$2,500
After School Program Sponsor	\$15,000
Annual School Program Sponsor	\$35,000

For Dogs

Dog Food Monthly Sponsor	\$50
Equipment/Supply Sponsor (Dog Harness).....	\$500
Buy a New Dog.....	\$1,500
Annual Vet Care Sponsor	\$1,500
Dog Training Sponsor (Name the Dog)	\$15,000
Emergency Vet Fund.....	any amount

For Clients

Client Placement Training (CPT) Sponsor	\$3,500
---	---------

Any contribution to CPT can help our clients

Administrative Needs

Office Color Copier Sponsor	\$500/mo
Program Vehicle Sponsor (donate an SUV or truck and get a tax write off).....	\$25,000
Instructor/Trainer Salary Sponsor.....	\$28,000
Operations Manager Salary Sponsor	\$35,000
ADW Training Facility Sponsors	\$3.5M Total Need
ADW Training Facility Single Room Sponsors	\$50,000 each

(Room Names in Memory of)

Any Amount is Truly Appreciated!

Assistance Dogs of the West is a 501(c) 3 tax exempt charity.

All contributions are 100% tax deductible.

Thank You to Our Donors

continued from page 7

Project Known Quantity

Isabella Gonzales*

Frank Clark
Cristen Conley & Mike Anderson
Lynne Marchand

Volunteers

Leo Abordo
Julie Allen

Roeliff Annon*

Bryan Arnst

Kitty Ault*

Sue Barns and Steve Koch*

The Bustamante Family

Anna Carlgren*

Dr. Ann Caudell

Marilyn Coon*

John Corey*

Ellie Dickens*

Marilyn Farquhar

Cory Felton

Karen Freeman

Isaac Green

Ingrid Hendrix*

Emily and Don Hnath*

Alex Johansen*

Mary Lattimore

PJ. Lewis*

Tony Mark

Kaila Matthews*

Tom and Pamela Matthews

Melissa Mayer

Peggy McDowell

Emily Medvec

Brenda Midyette*

Donna Middleton*

Linda Milanesi*

Dani, Tony and Matt Miller*

Cissy Moore

Jennifer Muldoon

Liz Napieralski

Leonard Padilla

Nancy Perlman

Faith Reyes

Rebekah Reyes*

Dr. John Romero

Derek Saunders*

Victoria Seale*

Sherry Shallenberger

Tom Simons

Dr. Elizabeth Stirling, Ph.D

Taylor Thorne

Dr. Larry Tilley*

Bill and Patti Uher

Patricia Waggoner

Betsy Walker*

Melissa Weiner*

Mary Sue Williams

Gail Willson

Ron and Melissa Winkle*

Spencer Wright*

Presenting Graduation 09

Sponsors

New Mexico Bank and Trust*

Bettina Baruch

Foundation*

Hotel Santa Fe*

Derek Saunders*

Graduation 09 Sponsors

Coca Cola

Bob Beedle

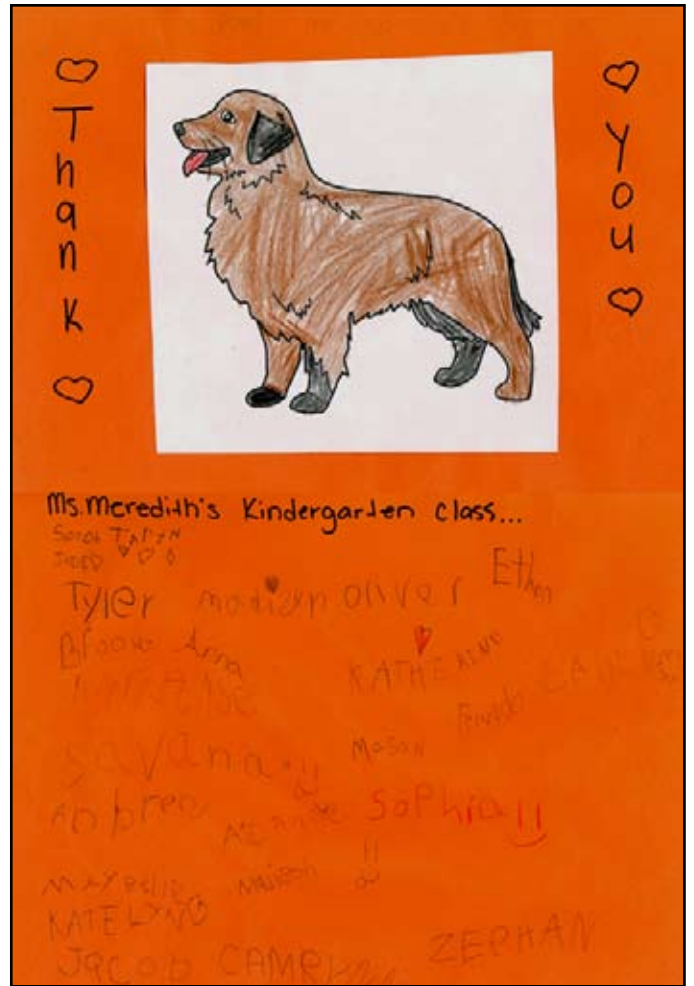
David and Kay Ingalls

Nan Newton & Dave Grusin

Marcia Owens Associates

Master Tech Auto

Things Finer



Ron Winkle, 2008 ABQ Volunteer of the Year, is still hard at work!

An Extraordinary Night

2009 Graduation Ceremony



Tuesday
May 12
6:00pm

Santa Fe
Convention
Center

ASSISTANCE DOGS
OF THE WEST

love & freedom

505.986.9748 • www.assistedogsofthewest.org



ADW Flea Garage Sale

Santa Fe treasure Sallie Wagner, collected materials from Mexico, Southwest Native Americans, and her travels far and wide. Her classic NM home above Santa Fe Prep was a living history museum. Sallie's relatives **Firth and Colin Walden** have a gigantic task as executors of the estate. They were introduced to ADW and felt Sallie, a great dog lover, would appreciate the large gift of a cornucopia of estate treasures for a fundraising event. This set the stage for the **ADW Flea Garage Sale on Saturday April 18 and Sunday April 19. Location: College Plaza Shopping Center** (by

Smith's grocery store at Cerrillos and St. Michael's Dr.)

During the long cold months of winter, many midwesterners take to hibernation and indoor activities. **Judy Illes**, a former Santa Fe resident and friend of ADW invited her knitting friends to participate in **"Knitting For A Better World"**. When they learned about ADW and its mission, word spread and knitters and dog lovers from the Midwest, California and the East Coast got busy with their needles to create items for the **ADW Flea Garage** event.

There is something for everyone, in every price range. We hope to see you there.

Assistance Dogs of the West
PO Box 31027
Santa Fe, NM 87594

Phone: 505-986-9748
Fax: 505-989-9640
info@assisteddogsofthewest.org
www.assisteddogsofthewest.org

Newsletter Sponsor—Impact Printing
Newsletter Layout—Marilyn Coon: Barker Penman, LLC

ADW STAFF

Carolyn Clark Beedle, ED
Jill Felice, Founder/Program Director
Jodie Backensto, Instructor/Trainer
Camille Romero, Admin Director
Kyle Lephart, Program Assistant
Liz Napieralski, Admin Assistant
Sue Barns, Instructor/trainer
Melissa Winkle, OT/Instructor
Leonore Abordo, Instructor/trainer
Kristy Anderson, Program Assistant
Dani Miller, Instructor/trainer
Linda Milanesi, Instructor/trainer
Anna Wilder, Instructor/trainer

BOARD MEMBERS

Kitty Ault, President
Melissa Weiner, VP
Ingrid Hendrix, Secretary
PJ Lewis, Treasurer
Anna Carligen
Dr. Ann Caudell, RN, PhD
Karen Freeman
Peggy McDowell
Emily Medvec
Linda Milanesi
Dr. John Romero, DVM
Dr. Larry Tilley, DVM
Derek Saunders
Spencer Wright
Jill Felice, ex officio
Carolyn Clark Beedle

Non-Profit Org.
U.S. Postage
PAID
Permit No. 64
Santa Fe, NM

